



Drying & Storage



Grain Bins

Non-Stiffened ■ Stiffened ■ Heavy-Gauge Drying ■ Hopper Bottom



Leading the Industr

After looking at many different bins from the inside out for nearly 40 years, Sukup made the critical decision to start building our own bins to complete our line of grain handling, drying and storage equipment. We brought in many bin experts to help us design our bins from scratch, unhindered by years of “we’ve always done it that way.” We then invested in new bin manufacturing equipment that is the most advanced, most efficient, and most accurate in the world.

The result – the Most Advanced Bin for the 21st Century, from the leader in grain drying, handling and storage – Sukup Manufacturing Co.



Patent Pending

Extra Strong Farm Roof - 5000 lb.

Sukup has designed our farm bin roof to withstand 40 lb/sq. ft. ground snow loads and wind loads generated from 90 mph gust wind speeds. And, it all starts out with high-strength steel. Then, each sheet is rigidized every 4" to increase the stiffness of the panels, making them easier to handle.



3" ribs serve as rafters for the roof structure, thereby; strengthening the sheets. The two bends on each side of the ribs further increase strength, allowing Sukup roofs to withstand heavy snow loads and high winds. Sukup takes the extra step of using two different size rollers to make the ribs on our roof sheets. With this system, the upper (overlapping) rib is slightly larger than the lower, allowing the sheets to completely overlap and nest properly.

The high-strength steel, rigidizing, and 3" ribs all work together to give Sukup Bins their outstanding roof strength.



The two different-sized ribs on Sukup roofs allow the sheets to nest together properly and create a tighter seal than other roofs with both ribs the same size.

The Bottom Line: Top-of-the-Line Production Equipment

When Sukup began producing bins, we invested in the most technologically advanced roll-forming equipment, built to our exacting standards, putting us decades ahead of the competition. We have continued to add to that equipment as our bin line has grown.

Our sidewall sheets start out as rolls of flat steel. Our machines punch the bolt holes, form the corrugations, and create the curve in the sheets, all to our tight tolerances. Every part of a Sukup Grain Bin starts out as blank steel that our dedicated employees use to create a top-quality finished product that they, and you, can be proud of.



y with Innovative Ideas



Man-Sized Access: Large Manhole

The oval manhole opening on Sukup Bins measures 20" x 35.5", making it a comfortable fit for farmers and allowing over 5 ft² of air exhaust area. A formed lip and rubber gasket keep rain and snow out of the bin. The cover fits securely over the lip, preventing any moisture leakage.

Special latches hold the manhole cover firmly in place, yet they can be easily released from the ladder side. When open, the door lays flat against the roof, eliminating the mess of water and soggy bees wings.

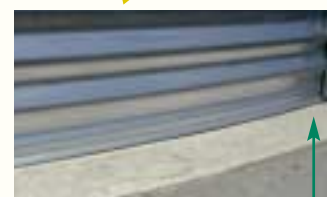


Proper Ventilation: Sukup Roof Vents

Sukup roof sheets can be pre-punched for 18" roof vents. Pre-punching the vent holes produces an extra-tall (1 1/8") extruded lip that works as a barrier, preventing moisture from leaking into the bin through the vent opening.



Sukup Bins feature 18" roof vents. Two 18" vents cost less, but give the same opening as three 15" vents.



The lip on Sukup vent openings is taller than any other brand to form a better moisture barrier.



Rolled Flange

Base Angle Ring

Have It Your Way: Rolled Flange or Base Angle Ring

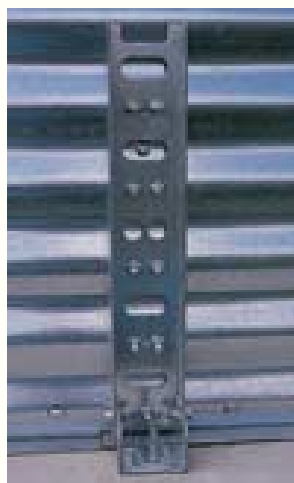
Sukup Bins are available with either a rolled flange bottom sheet or bolt-on base angle ring. Sukup offers both options at no extra charge.

Holding Strong: Exclusive Anchor Bracket

As with many other aspects of their bins, Sukup has taken the anchor bracket to a new level. The patented design of Sukup anchor brackets allows them to be reversed for use with either bolt-on base angle or rolled flange.

The Sukup anchor bracket also serves as a short stiffener. It is approximately 22" high (the tallest in the industry) to extend above the plenum area. Extending the bracket reduces the stresses caused by vertical loads on the sidewall sheets at the bottom ring.

The two-piece, channel-shape, "L" bracket transfers the vertical load directly to the concrete slab, rather than through the shoe, preventing damage to the bracket and/or the bottom bin sheet. The bracket also prevents vertical and horizontal movement of the bottom bin sidewall sheets. The exclusive two-piece design allows the bracket to flex with the settling of the bin.



Anchor Bracket
Patent No:
US 6,941,712 B2





The Strength You N



Opening Innovations: Extra-Large, Extra-Strong Fill Hole

The fill hole on Sukup Bins is an extra-large 38" that provides 8 ft² of air exhaust area. The double-domed cap that covers the fill hole is mounted on steel rods to allow it to slide open and closed and prevent it from being thrown around on windy days.

As an option, you can replace the domed lid with a 60" diameter diamond deck lid.



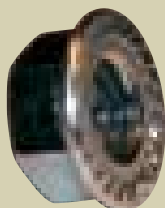
Powerful Support: Roof Clips



- Sukup roof sheets are supported every 9-3/8" at the eave by double-tab roof clips to provide maximum strength.
- Roof fastening clips may be set in either the "up" position for exhausting moisture-saturated air when drying or the "down" position for storage situations.

Built to Last: Serrated Flange Nuts on Roof Panels

Sukup uses serrated flange nuts to join and secure the roof panels. The flange makes erection quicker and easier and the serrations grip the roof surface and prevent the nut from working loose.



Strong and Versatile: Sukup Bin Door

Sukup offers two bin door designs – a 66" door is standard for drying or storage bins with 7 or fewer rings and a 44" door for storage bins with 8 rings or more. A 66" door is available as an option on 8 and 9 ring bins. Both doors are made of heavy-gauge, galvanized steel and are factory-assembled for a good fit and seal. Sukup Bin doors feature a reversible hinge that allows the door to open to the left or right, whichever works best for your system. The top and bottom latches on the outer door are connected for one-hand operation.



A Step Ahead: Sukup Bin Step

The Sukup bin step (included standard) is made from heavy-gauge galvanized steel with a special non-slip surface that doesn't hold water, providing sure footing, no matter what the weather. The bin step is notched to fit around Sukup anchor brackets, ensuring proper placement and a good fit.

Go Together Fast, Stand Up Strong: Sukup Sidewall Sheets

Sukup's advanced roll forming equipment and fixtures ensure close tolerances and high quality for the best fitting bin on the market. The precision-engineered, 4" wide corrugated, high-strength, galvanized steel sidewall sheets provide better vertical load carrying capacity. The 4" wide corrugations also create less resistance and friction to allow grain to flow more easily.

Sukup has streamlined bin erection by producing sidewall sheets with bolt holes that align properly, and also by pre-punching sheets for flashing, bolt-on base angle and Fastir stirring machine track (all optional and at no charge). You can also have transition openings pre-cut for your Sukup Fans at a nominal charge.

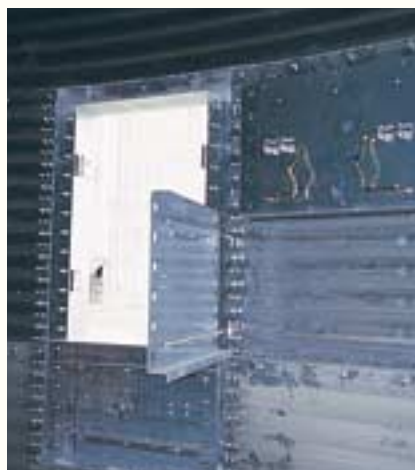


The "Little Things" Matter...A Lot

Sukup's dedication to quality doesn't stop with the "big things". All bolts on a Sukup Grain Bin are SAE Grade 8.2 (the highest standard in the industry) with JS 500 plating. The charts at right show the differences between bolts used by Sukup (in green) and those used by other bin companies.

Bolt Grade	Proof Load (psi)
8.2 (Sukup)	120,000
5	85,000
2	55,000

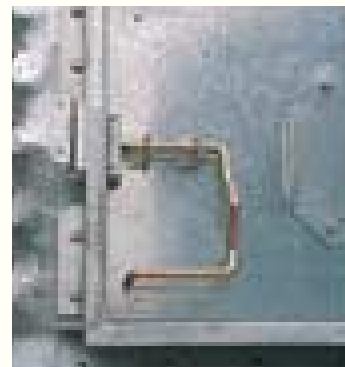
eed; Quality You Can Count On



On the Inside: Inner Bin Door

Sukup has designed a truly convenient inner bin door. It is reversible, has no tie-bars to contend with, and is also specially-designed to swing open a full 180° to rest flat against the sidewall.

Easy-open, “Knuckle-Saver” latches are designed with ample clearance between the handle and the door to prevent your knuckles from being smashed while opening and closing the door.



Form a Strong Bond: Bolts and Bolt Patterns

Sukup uses Grade 8.2 JS 500 plated bolts with a Polyethylene seal to join the sidewall sheets and form a weather-tight bond. All vertical seams are bolted in the peak and valley for a tight overlap of the sidewall sheets. Sidewall sheets 15 gauge and heavier are double-bolted on the peak and valley for increased connection strength and a tighter seal.



At the Top: Sukup Roof Rungs and Ladders

All Sukup Bins are equipped with eave-to-peak roof rungs. The rungs have a rounded design, eliminating sharp edges. Steps around the perimeter of the fill hole increase safety and convenience when working around the top of the bin.

Inside and outside ladders are needed for your safety and are available to your preference. Sukup ladders feature continuous handrails and rungs that are securely fastened, so they can't turn. Cages are available for outside ladders for increased safety. Manhole access platforms, landing platforms and stairs are also available.



Over 3000
Bin Models
Available



Yield Strength (psi)	Tensile Strength (psi)	Corrosion Protection	Hours to Red Rust
130,000	150,000	JS 500 (Sukup)	500
92,000	120,000	Polyseal	240
57,000	74,000	Zinc Dichromate	108
		Zinc	72



Drying Bins



Leading the Field

Sukup has been the leader in fans and heaters for grain drying for decades. Why? Because Sukup Fans are tops in airflow and Sukup heaters produce the most heat possible from the fuel consumed, resulting in clean, efficient drying.

Sukup also leads the way in unloading equipment. The Sukup Sweepway™ Power Sweep features fast, safe unloading. The Sweepway™ is permanently installed and all controls are located outside the bin, so there's no need to enter the bin.



Complete Stirring for Even Drying: Fastir™ Plus

The Sukup Fastir™ Plus, with its patented mechanical reversing system, is simply the most dependable stirring machine available. And, the constant pitch down augers move more grain for more even moisture content and less overdrying. A stationary outside auger on the Fastir™ Plus ensures complete stirring around the outside portion of the bin, where a large portion of the grain is located.



No One Knows Drying Like Sukup: Drying Bins

For forty years now, Sukup has been making grain drying more efficient and profitable. We have the equipment to do the job, and do it right. And, we have the bins to handle it!

Our standard stiffened and non-stiffened bins are designed for stir drying with three or fewer down auger stirring machines. If you're using a continuous flow system with a horizontal bottom unload, a recirculator system with a center, vertical unload or a stirring machine with 4 or more down augers, a Sukup Drying bin is the bin you need. Sukup Drying Bins were specifically-designed for the demands of these in-bin continuous flow drying systems, and are available stiffened or non-stiffened.



Sukup Heavy-Gauge Bins are available in the sizes shown at right, stiffened or non-stiffened.

# of Rings	Eave Ht.	Avail. Dia.
5	18'5"	15'-48'
6	22'1"	15'-48'

Let Off Some Steam: Sukup Bin Roofs

Proper moisture and air movement are essential for effective drying, so Sukup built their bins accordingly.

Sukup roof clips are designed to give you the eave clearance you need. In the down or storage position, the eave opening is narrow to protect your grain from the elements and keep pests out. But, if you're drying, you need additional eave clearance to allow moisture-saturated air to escape, so Sukup designed their roof clips with an "up" position as well. The "up" or drying position provides additional ventilation area.



The 32° pitch on Sukup Bin Roofs allows moisture to drain off easily.

DANGER! DO NOT ENTER BIN! Keep Clear of all augers.

If you must enter the bin:

Shut off and lock out all power. Use a safety harness and safety line. Station another person outside the bin. Avoid the center of the bin. Wear proper breathing equipment or respirator.

Purchase ladder and safety cages and use a safety harness.

Maintain secure hand and foot hold when climbing. Metal is slippery when wet. To avoid falls, never carry items while climbing on bin.

Failure to heed these warnings will result in serious injury or death.



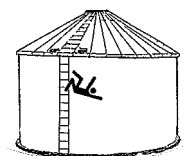
Rolling fighting will fall or dismember.



Crusted material will collapse and suffocate.



Flowing material will trap and suffocate.



Bin Specifications

Dia.	Rings	Eave Height	Peak Height	Max. Cap.	Level Cap.	Max. Cap. w/ Plenum	Level Cap. w/ Plenum	
15'	3	11'1"	15'5"	1848 Bu.	1651 Bu.	1693 Bu.	1496 Bu.	
	4	14'9"	19'	2395	2198	2239	2042	
	5	18'5"	22'8"	2941	2744	2786	2589	
	6	22'1"	26'4"	3487	3290	3332	3135	
	7	25'9"	30'	4033	3836	3878	3681	
	8	29'5"	33'8"	4580	4383	4425	4228	
	9	33'1"	37'4"	5126	4929	4971	4774	
	10	36'9"	41'	5672	5475	5517	5320	
	11	40'5"	44'8"	6219	6022	6063	5866	
	12	44'1"	48'4"	6765	6568	6610	6413	
	18'	3	11'1"	16'6"	2718	2378	2495	2154
		4	14'9"	20'2"	3505	3165	3281	2941
5		18'5"	23'10"	4292	3951	4068	3728	
6		22'1"	27'6"	5078	4738	4855	4514	
7		25'9"	31'2"	5865	5525	5641	5301	
8		29'5"	34'10"	6652	6311	6428	6088	
9		33'1"	38'6"	7438	7098	7215	6874	
10		36'9"	42'2"	8225	7885	8001	7661	
11		40'5"	45'10"	9012	8671	8788	8448	
12		44'1"	49'6"	9798	9458	9575	9234	
21'		3	11'1"	17'4"	3777	3237	3473	2932
		4	14'9"	21'	4848	4307	4544	4003
	5	18'5"	24'8"	5919	5378	5614	5074	
	6	22'1"	28'4"	6989	6449	6685	6145	
	7	25'9"	32'	8060	7520	7756	7215	
	8	29'5"	35'8"	9131	8590	8827	8286	
	9	33'1"	39'4"	10,202	9661	9897	9357	
	10	36'9"	43'	11,272	10,732	10,968	10,428	
	11	40'5"	46'8"	12,343	11,802	12,039	11,498	
	12	44'1"	50'4"	13,414	12,873	13,110	12,569	
	24'	3	11'1"	18'4"	5034	4227	4637	3830
		4	14'9"	22'	6433	5626	6035	5229
5		18'5"	25'8"	7831	7024	7434	6627	
6		22'1"	29'4"	9230	8423	8833	8026	
7		25'9"	33'	10,628	9821	10,231	9424	
8		29'5"	36'8"	12,027	11,220	11,630	10,823	
9		33'1"	40'4"	13,425	12,618	13,028	12,221	
10		36'9"	44'	14,824	14,017	14,427	13,620	
11		40'5"	47'8"	16,222	15,416	15,825	15,018	
12		44'1"	51'4"	17,621	16,814	17,224	16,417	
27'		3	11'1"	19'1"	6499	5350	5996	4847
		4	14'9"	22'9"	8269	7120	7766	6617
	5	18'5"	26'5"	10,039	8890	9536	8387	
	6	22'1"	30'1"	11,809	10,660	11,306	10,157	
	7	25'9"	33'9"	13,579	12,430	13,076	11,927	
	8	29'5"	37'5"	15,349	14,200	14,846	13,697	
	9	33'1"	41'1"	17,119	15,970	16,616	15,467	
	10	36'9"	44'9"	18,889	17,740	18,386	17,237	
	11	40'5"	48'5"	20,659	19,510	20,156	19,007	
	12	44'1"	52'1"	22,429	21,280	21,926	20,777	
	30'	3	11'1"	20'1"	8181	6605	7560	5984
		4	14'9"	23'9"	10,366	8790	9746	8170
5		18'5"	27'5"	12,552	10,976	11,931	10,355	
6		22'1"	31'1"	14,737	13,161	14,116	12,540	
7		25'9"	34'9"	16,922	15,346	16,301	14,725	
8		29'5"	38'5"	19,107	17,531	18,486	16,910	
9		33'1"	42'1"	21,292	19,716	20,672	19,096	
10		36'9"	45'9"	23,478	21,902	22,857	21,281	
11		40'5"	49'5"	25,663	24,087	25,042	23,466	
12		44'1"	53'1"	27,848	26,272	27,227	25,651	

Dia.	Rings	Eave Height	Peak Height	Max. Cap.	Level Cap.	Max. Cap. w/ Plenum	Level Cap. w/ Plenum	
33'	3	11'1"	21'8"	10,090 Bu.	7992 Bu.	9339 Bu.	7241 Bu.	
	4	14'9"	24'9"	12,734	10,636	11,983	9885	
	5	18'5"	28'5"	15,378	13,280	14,627	12,529	
	6	22'1"	32'1"	18,022	15,925	17,270	15,173	
	7	25'9"	35'9"	20,666	18,569	19,914	17,817	
	8	29'5"	39'5"	23,310	21,213	22,559	20,462	
	9	33'1"	43'1"	25,954	23,857	25,203	23,106	
	10	36'9"	46'9"	28,598	26,501	27,847	25,750	
	11	40'5"	50'5"	31,243	29,145	30,491	28,394	
	12	44'1"	54'1"	33,887	31,789	33,135	31,038	
	36'	3	11'1"	22'2"	12,235	9512	11,341	8618
		4	14'9"	25'10"	15,381	12,658	14,488	11,764
5		18'5"	29'6"	18,528	15,805	17,634	14,911	
6		22'1"	33'2"	21,675	18,952	20,781	18,058	
7		25'9"	36'10"	24,822	22,098	23,928	21,204	
8		29'5"	40'6"	27,968	25,245	27,074	24,351	
9		33'1"	44'2"	31,115	28,392	30,221	27,498	
10		36'9"	47'10"	34,262	31,538	33,368	30,644	
11		40'5"	51'6"	37,408	34,685	36,514	33,791	
12		44'1"	55'2"	40,555	37,832	39,661	36,938	
42'		3	11'1"	23'11"	17,271	12,946	16,054	11,729
		4	14'9"	27'7"	21,554	17,229	20,337	16,012
	5	18'5"	31'3"	25,837	21,512	24,620	20,295	
	6	22'1"	34'11"	30,120	25,795	28,903	24,578	
	7	25'9"	38'7"	34,403	30,078	33,186	28,861	
	8	29'5"	42'3"	38,686	34,361	37,469	33,144	
	9	33'1"	45'11"	42,969	38,644	41,752	37,427	
	10	36'9"	49'7"	47,252	42,927	46,035	41,710	
	11	40'5"	53'3"	51,534	47,210	50,318	45,993	
	12	44'1"	56'11"	55,817	51,493	54,601	50,276	
	48'	3	11'1"	25'8"	23,365	16,909	21,775	15,320
		4	14'9"	29'4"	28,959	22,503	27,369	20,914
5		18'5"	33'	34,553	28,098	32,964	26,508	
6		22'1"	36'8"	40,147	33,692	38,558	32,102	
7		25'9"	40'4"	45,741	39,286	44,152	37,696	
8		29'5"	44'	51,335	44,880	49,746	43,291	
9		33'1"	47'8"	56,929	50,474	55,340	48,885	
10		36'9"	51'4"	62,523	56,068	60,934	54,479	
11		40'5"	55'	68,117	61,662	66,528	60,073	
12		44'1"	58'8"	73,711	67,256	72,122	65,667	
54'		9	33'1"	49'8"	73,072	63,881	71,061	61,870
		10	36'9"	53'4"	80,152	70,961	78,141	68,950
	11	40'5"	57'	87,232	78,041	85,221	76,030	
	12	44'1"	60'8"	94,312	85,121	92,301	83,110	
60'	9	33'1"	51'6"	91,473	78,865	88,990	76,382	
	10	36'9"	55'2"	100,214	87,606	97,731	85,123	
	11	40'5"	58'10"	108,955	96,347	106,472	93,864	
	12	44'1"	62'6"	117,696	105,088	115,212	102,604	

Bin capacities and weights are calculated based on ASAE S.413.1 Standard with 6% compaction.

Plenum height calculated at 12.5".

- Figures shown in black apply to all Sukup Farm Bins.
- Figures in green apply only to Sukup Stiffened Farm Bins.
- Sukup Drying Bins are available in 5 and 6 rings up to 48' dia.





Stiffened Farm and



Economical Strength: Sukup Stiffened Farm Bins

Sukup Stiffened Farm Bins are an economical grain storage alternative. Adding stiffeners to a bin allows the use of lighter gauge sidewall sheets, without sacrificing structural strength; thereby, making a stiffened bin more economical. Stiffened bins also provide excellent structural stability against grain, wind and seismic loads. In addition, stiffeners transfer roof loads directly to the foundation, resulting in less stress on the sidewall sheets. And, Sukup Stiffened Bins are the strongest available.



We've Got It Covered: Base Stiffeners

Sukup base stiffeners cover the bottom two wall sheets and extend above the horizontal seam of the sheets for better support and structural integrity. Standard stiffeners are 88" to cover two sheets. Sukup Stiffened Bins are available with bolt-on base angle only.

Standing Strong: Sukup Farm Stiffeners

Sukup farm bin stiffeners have up to a 42,000 lb. effective load capacity. Our extra-strong stiffeners are made from high-strength steel, which is bent and formed into a specifically-engineered, stiffened-hat shape that maximizes the strength of the steel. The end result is a stiffener that will stand straight and strong for many years – and bushels – to come.



Strength on Top: Extra Strong Bin Roofs

Stiffened Farm Bins up to 48' diameter feature our standard farm roof. Our 5000 lb. standard farm roofs are capable of carrying a 40 lb/ft² ground snow load and can withstand up to 90 mph wind gust speeds. 54' and 60' diameter stiffened, farm-duty bins feature our 15,000 lb. roof. The 15,000 lb. roofs are designed to carry a 40 lb/ft² ground snow load and can withstand up to 90 mph wind gust speeds.



Sukup Bin roof shown above with safety railings (ordered separately).

Our 15,000 lb. roof has the same external roof sheet structure as our standard roof, but has the added support of external roof rings and inner C-shaped rafters and purlins.



Sukup Stiffened Farm Bins Available Sizes

# of Rings	Eave Ht.	Peak Ht.	Diameter	Max. Cap.
3 - 12	11'1" - 44'1"	15'5" - 62'6"	15' - 60'	2941 - 117,696 Bu.

Commercial Bins

The Complete Line: Sukup Commercial Bins

Along with our full line of farm-duty bins, Sukup also manufactures a full line of commercial bins.

Commercial Bin Sizes

Dia.	Peak Heights Avail.	Max. Capacities Available (Bu.)	Roof Peak Load (Lbs.)
42'	45'11" - 100'11"	42,969 - 107,213	5000, 15,000 or 30,000
48'	47'8" - 102'8"	56,929 - 140,840	5000, 15,000 or 30,000
54'	49'8" - 104'8"	73,000 - 179,272	5000, 15,000 or 30,000
60'	51'6" - 106'6"	91,473 - 225,585	5000, 15,000 or 30,000
72'	54'8" - 109'8"	135,353 - 324,153	15,000 or 30,000
75'	55'7" - 110'7"	147,852 - 352,713	15,000 or 30,000
78'	56'6" - 111'6"	160,982 - 382,560	15,000 or 30,000
90'	60'3" - 115'3"	219,999 - 514,999	15,000 or 30,000
105'	64'8" - 123'4"	309,096 - 737,392	30,000

Eave Heights available: 9-24 rings, 33'1"-88'1".
105: 9-25 rings, 33'1"-91'9"



For more complete details on Sukup Commercial Bins, see our Commercial Storage Tanks brochure.



Keeping It Together: Sukup Bolt Patterns

The bolt patterns and sizes on Sukup commercial bins vary by bin diameter and were engineered to maximize the strength of the connection and form the strongest bond possible between the sheets.

All bolts are JS 500 coated, SAE Grade 8.2.



Strongest Roof in the Industry
30,000 lb. Peak Load

30,000 lb. Peak Ring Load: Sukup Commercial Bin Roofs

Sukup's commercial bin roofs have a 30,000 lb. peak ring load rating. Most competing brands have only a 10,000 lb. load rating. Sukup commercial roofs are also designed to withstand 40 lb/ft² ground snow load and 90 mph gust wind speeds.

The strength of the 30,000 lb. Sukup roof comes from double C-shaped channels forming I-beam rafters with C-shaped purlins. All rafters and purlins are manufactured as a single piece from 65,000 psi steel with the most-advanced roll-forming equipment in the industry.

Let Gravity Do the Work: Side Draw

Side Draw Systems allow you to draw grain off the sides of the upper sidewalls and are available on Sukup Commercial Bins 18' dia., 7 rings through 105' dia., 25 ring. This system of unloading allows grain to be discharged using gravity, rather than electricity, saving you money.

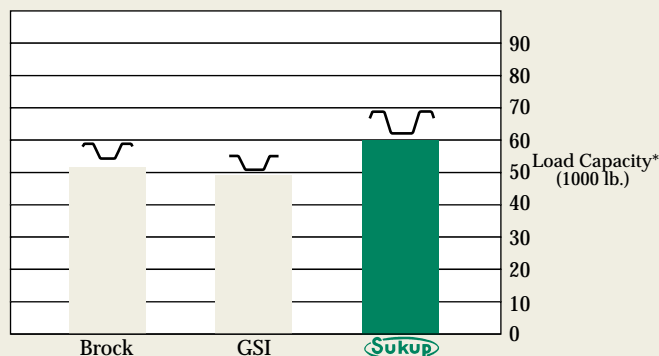
Side Draws have 12" openings and are equipped with baffles, down spout and rack and pinion.



Sukup vs. the Competition: Commercial Stiffeners

Not all stiffeners are designed alike, and not all stiffeners perform alike. Sukup commercial stiffeners are made from 65,000 PSI tensile strength steel. Their computer-engineered shape was developed specifically to make them the strongest on the market. Our 60,000 lb. effective load capacity* tells us we've succeeded in meeting our objective; and, the chart at right proves it.

*Effective load carrying capacities of the stiffeners were calculated based on American Iron and Steel Institute (AISI) Cold-Formed Steel Standards with 8 ga. ASTM A653 Grade 50 steel.





Hopper Bottom Bin



The Most Advanced Dryers Available: Sukup Grain Dryers

Sukup Grain Dryers are the most advanced dryers available, providing you with easy, efficient drying and top quality grain. Other dryers are hard to operate and hard on the grain. Sukup Grain Dryers were designed specifically to solve those problems.

- Sukup Dryers produce better quality grain thanks to the patented Quad Metering Roll System on all Sukup Dryers and the patented Grain Cross Over System on Stacked Dryers.
- Quad Metering Rolls move the grain closest to the heat through the dryer more quickly to prevent overdrying of these inner layers.
- The Grain Cross Over on Sukup Stacked Dryers moves the grain from one side of the dryer to the other to off-set the effects of weather on the drying process.
- Sukup's computerized controls walk you through start-up and general operation with prompts on a large LCD screen.
- Advanced self-diagnostics not only describe any problems, but also provide you with correction options.



Stronger by Design: Sukup Hopper Bottom Bins

The design of Sukup Hopper Bottom Bins is one of the strongest in the industry, with wide corrugations, full-length stiffeners, and heavy-gauge hopper panels.

The tank portion of our hopper bottom units features the same quality sidewall construction as standard Sukup Bins, as well as the same extra-strong roof.



Round Boltheads Prevent Hang-Ups

Sukup uses round-head bolts throughout the hopper portion to prevent grain from getting hung-up and bridging.

Exclusive Inner Apron Lets Grain Flow

Sukup Hopper Bottom Bins feature hopper ring flashing that covers the seam where the tank and bottom cone join. This flashing prevents grain from accumulating at the seam and allows grain to flow freely into the hopper.





The Right Base for Your Hopper Bin

The base for your Sukup Hopper Bottom Bin is tailored to the size of the bin and the load capacity required. All base configurations start with 70,000 psi tensile strength steel wide flange legs. The wide flange (I-Beam) construction makes the legs extra-strong and stable, and L-shape cross-bracing between the legs adds even more stability.

Clear It Out: 16" Unload Outlet

Sukup Hopper Bottom Bins are designed to hold free-flowing grains up to 52 lb./ft³, with an unload rate of 9000 bu/hr.

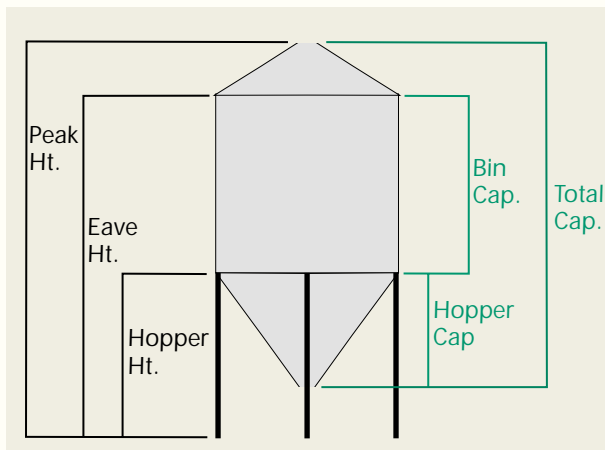
A rack and pinion roller slide gate is standard on the large, 16" dia. unload outlet to make it easier to open and close the hopper. 3 ft. of ground clearance allows plenty of room for an auger take-up.

The hopper panels are made of heavy-gauge, galvanized steel for strength and durability.



Easy Access: Optional Bin Door

Our standard one-ring (44") door is available as an option on Sukup Hopper Bottom Bins.



Hopper Bottom Bins

Dia.	# of Rings	Hopper Ht.	Eave Ht.	Peak Ht.	Hopper Cap.	Bin Cap.	Total Cap.	Weight Cap.	
15'	3	9'7"	21'7"	25'10"	371 Bu.	1848 Bu.	2219 Bu.	64 Tons	
	4	9'7"	24'4"	28'7"	371	2395	2766	80	
	5	9'7"	28'	32'3"	371	2941	3312	96	
	6	9'7"	31'8"	35'11"	371	3487	3858	111	
	7	9'7"	35'4"	39'7"	371	4033	4404	127	
	8	9'7"	39'	43'3"	371	4580	4951	143	
	9	9'7"	42'8"	46'11"	371	5126	5497	159	
	10	9'7"	46'4"	50'7"	371	5672	6043	175	
	11	9'7"	50'	54'3"	371	6219	6590	190	
	12	9'7"	53'8"	57'11"	371	6765	7136	206	
	18'	3	11'2"	23'2"	28'7"	641	2718	3359	97
		4	11'2"	25'11"	31'4"	641	3505	4146	120
5		11'2"	29'7"	34'12"	641	4292	4933	142	
6		11'2"	33'3"	38'8"	641	5078	5719	165	
7		11'2"	36'11"	42'3"	641	5865	6506	188	
8		11'2"	40'6"	45'12"	641	6652	7293	211	
9		11'2"	44'3"	49'8"	641	7438	8079	233	
10		11'2"	47'11"	53'3"	641	8225	8866	256	
11		11'2"	51'6"	56'12"	641	9012	9653	279	
12		11'2"	55'3"	60'8"	641	9798	10,439	301	
21'		3	12'9"	24'9"	31'	1017	3777	4794	138
		4	12'9"	27'6"	33'9"	1017	4848	5865	151
	5	12'9"	31'2"	37'5"	1017	5919	6936	182	
	6	12'9"	34'10"	41'1"	1017	6989	8006	213	
	7	12'9"	38'6"	44'9"	1017	8060	9077	243	
	8	12'9"	42'2"	48'5"	1017	9131	10,148	274	
	9	12'9"	45'10"	52'1"	1017	10,202	11,219	305	
	10	12'9"	49'6"	55'9"	1017	11,272	12,289	336	
	11	12'9"	53'2"	59'5"	1017	12,343	13,360	367	
	12	12'9"	56'10"	63'1"	1017	13,414	14,431	398	
	24'	3	14'5"	26'5"	33'8"	1518	5034	6552	189
		4	14'5"	29'2"	36'5"	1518	6433	7951	196
5		14'5"	32'10"	40'1"	1518	7831	9349	237	
6		14'5"	36'6"	43'9"	1518	9230	10,748	277	
7		14'5"	40'2"	47'5"	1518	10,628	12,146	318	
8		14'5"	43'10"	51'1"	1518	12,027	13,545	358	
9		14'5"	47'6"	54'9"	1518	13,425	14,943	398	
10		14'5"	51'2"	58'5"	1518	14,824	16,342	439	
11		14'5"	54'10"	62'1"	1518	16,222	17,740	479	
12		14'5"	58'6"	65'9"	1518	17,621	19,139	520	
27'		3	15'11"	27'11"	35'11"	2161	6499	8660	250
		4	15'11"	30'8"	38'8"	2161	8269	10,430	250
	5	15'11"	34'4"	42'4"	2161	10,039	12,200	301	
	6	15'11"	38'	46'	2161	11,809	13,970	352	
	7	15'11"	41'8"	49'8"	2161	13,579	15,740	403	
	8	15'11"	45'4"	53'4"	2161	15,349	17,510	454	
	9	15'11"	49'	57'	2161	17,119	19,280	505	
	10	15'11"	52'8"	60'8"	2161	18,889	21,050	556	
	11	15'11"	56'4"	64'4"	2161	20,659	22,820	607	
	12	15'11"	60'	68'	2161	22,429	24,590	658	
	30'	3	17'3"	29'3"	38'3"	2965	8181	11,146	322
		4	17'3"	32'	41'	2965	10,366	13,331	310
5		17'3"	35'8"	44'8"	2965	12,552	15,517	373	
6		17'3"	39'4"	48'4"	2965	14,737	17,702	436	
7		17'3"	43'	52'	2965	16,922	19,887	499	
8		17'3"	46'8"	55'8"	2965	19,107	22,072	562	
9		17'3"	50'4"	59'4"	2965	21,292	24,257	626	
10		17'3"	54'	63'	2965	23,478	26,443	689	
11		17'3"	57'8"	66'8"	2965	25,663	28,628	752	
12		17'3"	61'4"	70'4"	2965	27,848	30,813	815	

Bin capacities and weights are calculated based on ASAE S.413.1 Standard with 6% grain compaction.



Grow With Us

In the fall of 1962, Eugene Sukup, a young, innovative farmer, bought his first grain bin to dry and store shelled corn. Unfortunately, he found drying to be slow, and pockets of grain began to overheat and spoil. To break up the pockets and speed the drying process, he modified a stoker auger from a coal furnace and inserted it in an electric drill. Then using a chain, he hung it from the top of the bin to loosen the hot spots and prevent spoilage.



This new process worked so well, Eugene began making the augers at a local welding shop in Sheffield, Iowa. He sold 5 units to a local bin dealer for \$29.95 each, but when he went back to check on them, he found that only three had sold and one of those had been returned. Eugene went back to the drawing board to develop an automatic machine. He came up with the idea of adding a horizontal auger through the handle of the drill, and the Stirway was born.

Forty years and 70 patents later, Eugene and his sons, Charles and Steve, have expanded a single idea into a worldwide leadership in drying, handling and storage equipment. Sukup's main manufacturing facilities are still located

in Sheffield, Iowa. Sukup also has six company-run distribution centers located across the U.S.

In this time of corporate take-overs and mergers, the Sukup family is proud to be the only family-owned grain drying, handling and storage equipment manufacturer serving your family's needs.



Sukup Manufacturing Co. fills your Sukup Grain Bin with quality Quality Equipment and Quality Grain

Sukup Axial and Centrifugal Fans and Heaters supply your grain with the highest airflow and efficient heat, resulting in faster drying and lower fuel costs. Sukup Fans are also ideal for aerating your grain. Plus, Sukup has a full line of aeration accessories for both flat bottom and hopper bottom bins.



The Sukup Sweepway™ Power Sweep Bin Unloading System unloads your grain quickly and is safer, since all controls are located outside the bin, so there's no reason to enter the bin.



A Fastir™ Stirring Machine further increases drying speed and eliminates overdried grain. A simple, dependable mechanical reversing switch makes the Fastir™ the most trouble-free stirring machine available.

Sukup Hawk Cut™ Bin Floor and Z Post or Super Supports provide a solid base for your grain. Sukup Hawk Cut™ floors are extra-strong since no steel is removed while creating the open areas in the planks.



Sukup Manufacturing Company ■ www.sukup.com

P.O. Box 677 ■ 1555 255th St. ■ Sheffield, Iowa USA 50475 ■ Phone: 641-892-4222
Fax: 641-892-4629 ■ Email: info@sukup.com

Six Distribution Centers To Serve You Better

Jonesboro, AR 72403
5917 E. Johnson Ave.
Phone: 870-932-7547
Fax: 870-933-8946

Arcola, IL 61910
980 East State Rte 133
Phone: 217-268-3026
Fax: 217-268-3522

Cameron, MO 64429
7426 NE 352nd St.
Phone: 816-649-2226
Fax: 816-649-2225

Aurora, NE 68818
1750 East Hwy. 34
Phone: 402-694-5922
Fax: 402-694-5921

Defiance, OH 43512
7724 State Rte. #66N
Phone: 419-784-9871
Fax: 419-784-9872

Watertown, SD 57201
2701 Piper Ave.
Phone: 605-882-6697
Fax: 605-884-0467