

Z-Post Floor Supports

Precision-Engineered Support

University tests show that Sukup Z-Post Floor Supports are 40%-65% stronger than U-Shaped floor supports. Rock-solid Z-Post supports are reinforced by numerous corrugations and strengthened by Z-shaped bends. The exclusive "Z" shape gives 60% more inches of load bearing support than typical U-shaped posts. The diagonal portion of the Z-Post provides additional support across the center of the floor plank for extra strength, which is required for taller bins and recirculating devices.

Greater Stability

The Sukup Z-Post covers a larger area, giving a wider, more solid base. Notched sides and the self-tightening spring action lock the supports in place, so they don't move around under the weight of the grain.

More Uniform Airflow

The Sukup Z-Post offers the largest air opening of any post support on the market. The design of the Sukup Z-Post also helps to distribute drying air more evenly throughout the plenum area.

Available in a Variety of Sizes

Sukup Z-Post supports are available in 5 1/4", 12 1/2", 13 1/4", 15 7/8", 17" and 18 1/2" overall heights.

Z-Post supports may be used with Channel-Lok™ and ZipperLok™ Floors.

*5 1/4" supports do not have notched sides or air opening.



Patented notches on Sukup Z-Post Supports lock the supports in place, making installation a snap and forming a more stable base.

Super Supports™

This style of floor support from Sukup really is "super". The welded-rod frame of Sukup Super Supports™ lets air flow freely throughout the bin plenum area. This open design provides better heat distribution, which makes for more efficient drying. The unique angle iron base provides stability, so your bin floor will be rock-solid. Super Supports™ are also fast and easy to install.

Super Strong

The strength of Sukup Super Supports™ makes them ideal for continuous flow drying systems.

Super Versatility

Sukup Super Supports™ can be used with any Sukup bin floor. They are required for the center portion of Sukup ZipperLok™ floors.

Super Supports™ are available in 5 1/4", 13 1/4", 15 7/8" and 17" heights.



New Late 2007
Sukup Super Supports™ provide excellent airflow, easy installation and an extra strong design. Painted finish shown throughout this brochure is optional.

Important: Consult Sukup specifications for number and gauge of supports required at particular grain depths. Proper installation according to Sukup instructions on smooth, level concrete is essential.



Sukup Grain Bins

Quality, Right from the Start

To build a quality grain drying or storage system, you have to start with top quality components. Make sure your system starts with Sukup Grain Bins. Sukup Bins are built from the top down to be the best.

- 5000, 10,000 or 15,000 lb roofs available.
- 15' - 105' diameter bins available
- Large inner and outer walk-through doors are reversible to match your system layout.
- Knuckle-Saver latches on inner doors protect your hands and give you the torque you need to open the doors easily and close them tightly.

Sukup Unloading Equipment

Fastest Unloading in the Industry

Sukup offers a full line of 6", 8", 10", and 12" unloading equipment designed to unload your bin quickly and easily, with the fastest unloading rates in the industry. While you're installing a new bin floor, it's a great time to upgrade your system with the addition of a Sukup Sweepway.



Sukup Sweepway permanently installed for fast, convenient unloading

Sukup Unloading Systems feature a unique design which allows you to pull the flighting without removing the powerhead for easier maintenance. The special powerhead design also allows for easy belt adjustments.

The Sukup Sweepway Power Sweep is permanently installed in the bin for easier operation. All controls are located outside the bin, so there's no need to enter the bin during unloading.

Sukup Tube and Well Systems are the economical way to unload your bin and are available as angle ring or sleeve mount. The Sukup Carry-In Sweep can be moved from one bin to another.



Sukup Tube and Well System with Carry-in Sweep

Upgrade Now!

Sukup manufactures a full line of grain handling, drying, and storage equipment to help you put together the most efficient system for your operation. Sukup fans combine with Sukup Floors for the beginning of a high capacity, in-bin dryer. The addition of a Fastir stirring machine speeds drying and eliminates overdried grain.



FANTastic Sukup Fans—First in Airflow, Flawless Performance



Sukup Fastir—Simply Dependable, Superior Stirring



Sukup Manufacturing Company ■ www.sukup.com

Box 677 ■ 1555 255th Street ■ Sheffield, Iowa 50475-0677 ■ Phone 641-892-4222
Fax: 641-892-4629 Email: info@sukup.com

Distribution Locations:
 Arcola, IL 61910
 980 E. State Rte. 133
 217-268-3026
 L1155-012007G
 Aurora, NE 68818
 Hwy 34 E.
 402-694-5922
 Defiance, OH 43512
 Rte. 66 North
 419-784-4871
 Jonesboro, AR 72403
 5917 E. Johnson Ave.
 870-932-7547
 Cameron, MO 64429
 7426 NE 352nd St.
 816-649-2226
 Watertown, SD 57201
 2701 Piper Ave. 57201
 605-882-6697
 © 2007 Sukup Manufacturing Co.



Hawk Cut™ Floor



Perforated Floor



Other Floor
Sukup Floors Stand Above The Rest
Sukup Hawk Cut™



Super Support™



Z-Post Support

- Hawk Cut Flooring is twice as strong as other smooth floors.
- Sukup Perforated Flooring is fully corrugated for extra strength.
- ZipperLok™ floors allow easy access to the center plenum area.

Sukup Bin Flooring

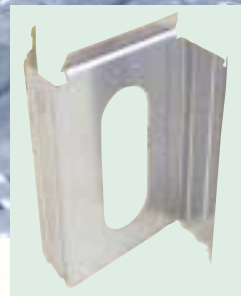
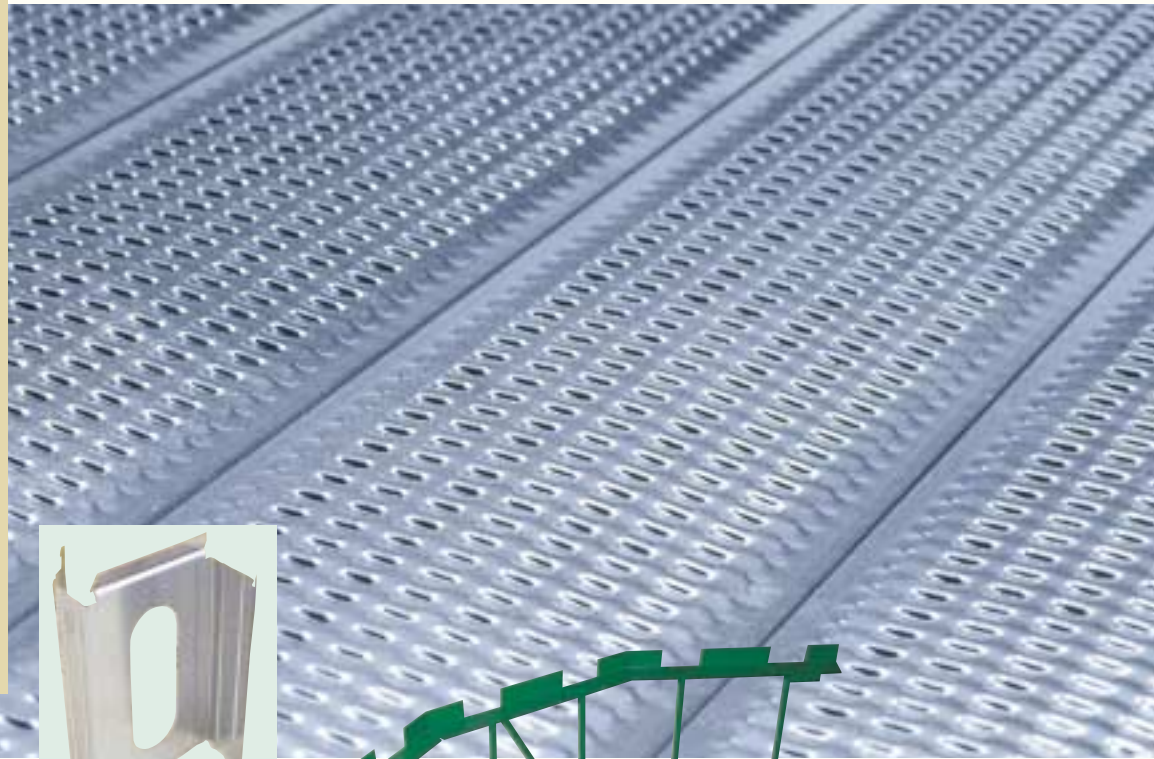
Sturdy, Dependable, Economical

Sukup Channel-Lok™ floor planks feature sturdy J-shaped interlocking sides. Each plank is made of high-strength, galvanized steel and is cut to length with computerized accuracy.

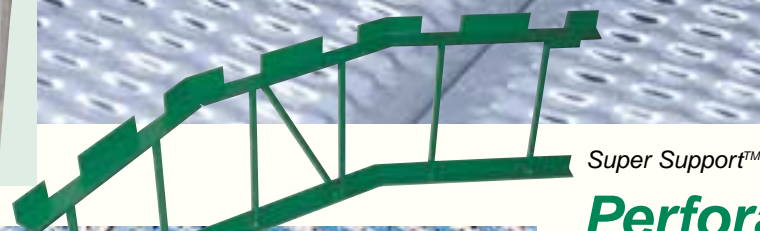
Sukup floor planks will accommodate most drying or storage needs. They are also ideal for flush floor aeration applications.

Channel-Lok™ floors are available in Hawk Cut™ or Perforated styles and may be installed with either galvanized steel Z-post™ Supports or welded steel Super Supports™. Combining Channel-Lok™ floor planks with Sukup supports is the quickest and easiest way to install a floor.

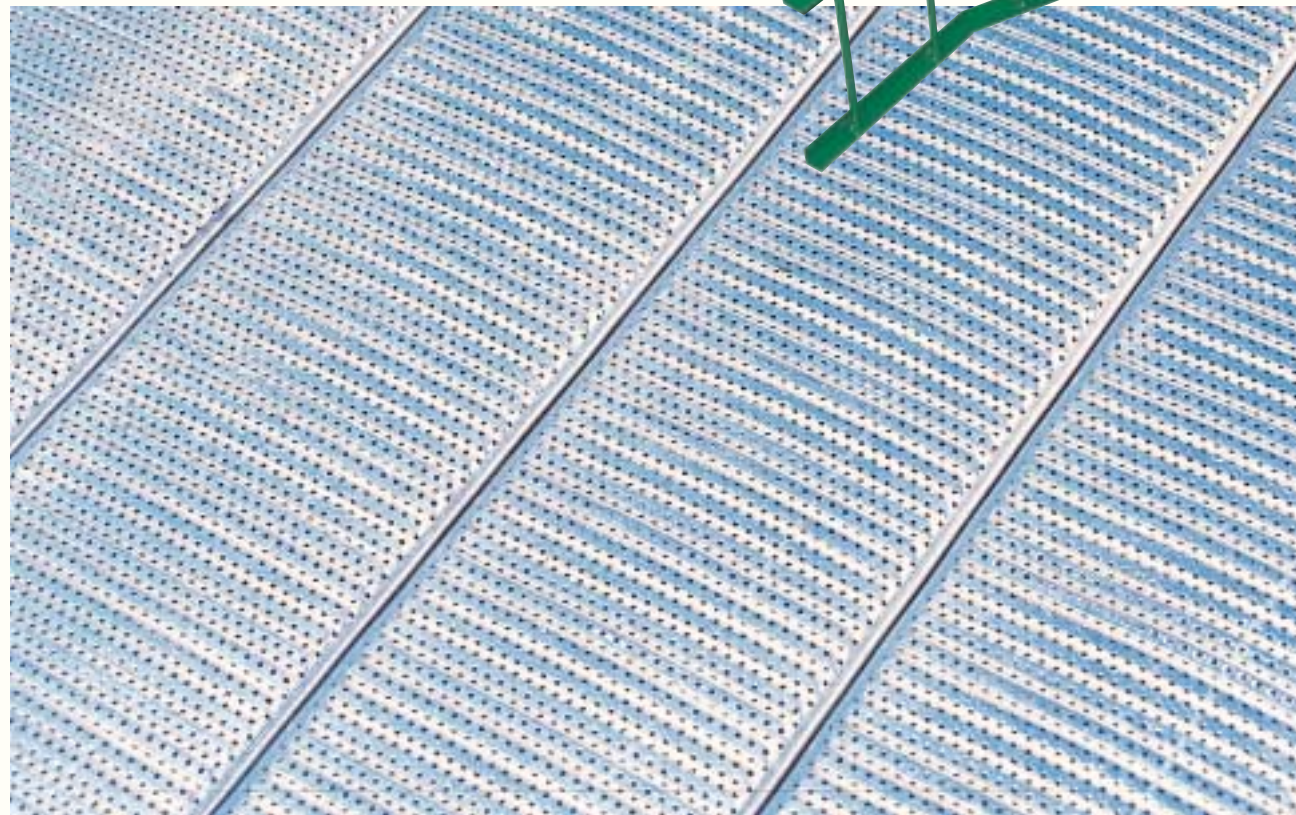
Channel-Lok™



Z-Post Support



Super Support™



Hawk Cut™

Twice As Strong

Our exclusive process does not remove any steel in forming the large open area in the plank. All openings are created in the sloped sides of the corrugation, not at the top or bottom ridge of the corrugation, which would weaken the planks. Combined with the high arch of the corrugation, this allows Hawk Cut™ planks to support up to twice the weight of other smooth floors.

Easy Sweeping

Hawk Cut™ planks are smoother and easier to sweep than conventional chisel-cut floors.

Take the Hawk Cut™ Challenge

Compare the strength of Hawk Cut™ to other flooring by standing on planks of each. You'll feel the extra support of Hawk Cut™ flooring for yourself.

For High Grain Depths

With their superior design, Hawk Cut™ floors are suitable for almost any size grain from corn and soybeans to milo. For very small grains like canola, use Sukup Perforated Floors.

Perforated

The Perfect Perforation

Sukup's clear punched holes provide ample open area for maximum airflow. The smooth perforations form an ideal surface for easy sweeping and clean-up.

20 Gauge or 18 Gauge

Sukup perforated flooring is available in 20 gauge or 18 gauge planks. 20 gauge planks are for use in bins with lower grain depths. 18 gauge planks are available for deeper grain depths.

Two Perforated Sizes

Channel-Lok Perforated plank is available with either the standard 0.0945" diameter holes or 0.05" diameter holes, which is ideal for canola and other very small grains.

Fully Corrugated for Strength

The corrugation on Sukup planks extends completely across the width of each plank for greater strength than many other perforated floors. This gives up to 80% more strength than floors where the corrugation stops short. Sukup perforated floors are also crowned for added strength.

Flush Floor Aeration

Low-Cost Aeration Alternative

Sukup Channel-Lok Flooring (Hawk Cut™ or Perforated) and supports install easily over concrete tunnels for an efficient, low-cost aeration alternative.

Square Pad System

Better Air Distribution

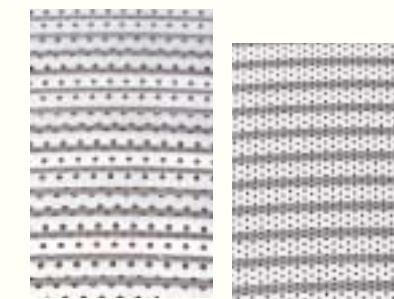
Sukup square pad systems constructed with Sukup Channel-Lok flooring offer improved air distribution and more airflow than aeration ducts.



Other Floor

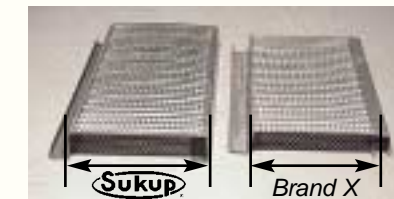
Sukup Hawk Cut™

Hawk Cut™ Floors Stand Above The Rest.



0.0945" Perforated

0.05" Perforated

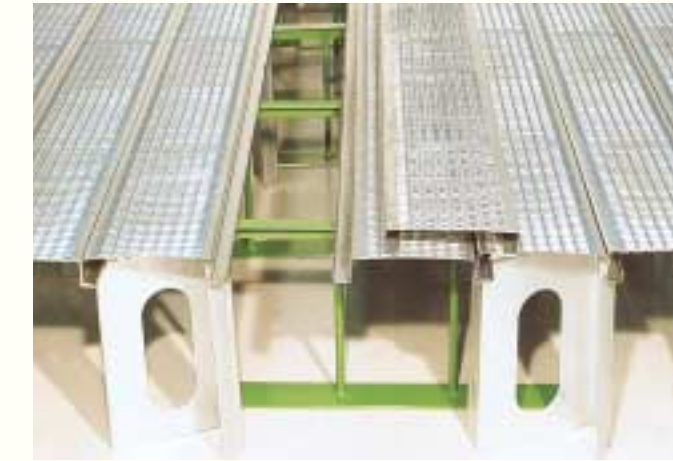


Corrugation on Sukup Perforated floors extends across the width of the plank.



ZipperLok™

The ZipperLok™ floor is made up of a combination of Handy-Lok™ and Channel-Lok™ planks. The Handy-Lok™ plank (the "Zipper") can be easily removed from the center area of the bin.



Make Cleaning Easy

The innovative Sukup ZipperLok™ Floor is designed to allow easy access to the area under the bin floor for maintenance of unloading equipment and for cleaning.

ZipperLok™ Floors make use of interlocking planks designed by Sukup, so getting to the center of the bin this easily is exclusive to Sukup.

The interlocking design makes it easy to remove planks. This is a big time saver when servicing equipment and cleaning under the floor.

The galvanized planks are extra strong since they feature the Hawk Cut™ surface, which supports twice the weight of other smooth floors.

Easy Access to the Center of the Bin

The Sukup ZipperLok™ is an exclusive combination of Channel-Lok™ planks and a "Zipper" Hawk Cut™ floor plank. With the ZipperLok™ configuration, the "Zipper" can be easily removed from the center area of the bin.

Economical Convenience

All of the convenience of the ZipperLok™ is available at the same price as a standard Channel-Lok™ Hawk Cut™ floor.

Easy Cleaning and Servicing

The Zipper allows easy access to the center portion of the bin for servicing unloading equipment or cleaning under the floor. With the ZipperLok™ floor, you don't have to remove half of all the planks from the outer edge to access the middle, as you would with a conventional floor.

Two Support Choices

The ZipperLok™ floor is supported by a combination of proven Sukup Z-Post supports and Super Supports™ or Super Supports™ only.

Sukup Flashing



Heaviest on the Market

Sukup 20 gauge Hawk Cut™ flashing gives 10" of coverage from the bin wall. The width allows the flashing to fit easily around even smaller diameter bins; and, at 20 gauge, it's the heaviest flashing on the market. Hi-back or Low-back flashing available for fitting various floor supports. Sukup flashing is available pre-punched for Sukup Airways™.